

Item No 5(b)(ii)

1 City Centre Neighbourhood Partnership

1.1 Total licences and type

Venue Type ¹	Licences
Adult Entertainment	3
Cafe	19
Convenience Store	19
Hostel/Backpackers	5
Hotel	64
Multipurpose venue	6
Nightclub	33
Off sales	13
Other	24
Other retail	20
Pub/Bar	161
Restaurant	223
Social Club/Sports Club/Private Members Club	15
Supermarket	8
Takeaway	9
Theatre/Cinema/Casino/Bingo	8
Total Licenses	630

Notes:

1. Licence data from City of Edinburgh council - please see notes as to how venue type was categorised.
2. Population based on CHI GP registration data and patient postcodes.
3. Off-sales include: Convenience Stores, Supermarkets, Takeaways and Off sales.
4. Patients discharged from hospital (annually) with alcohol related and attributable conditions:
3-year total number and 3-year average directly age-sex standardised rate per 100,000 population per year.
5. Deaths from alcohol related and attributable conditions:
5-year total number and 5-year average directly age-sex standardised rate per 100,000 population per year.
Indicators 4 & 5 are from ScotPHO Neighbourhood Partnership Profiles 2010

1.2 Licences per 10,000 population (aged 18+)²

Indicator	City Centre NP	City of Edinburgh
Total licences	630	1816
Total licences per 10,000 population	265.8	43.0
Off-sales licences ³	49	412
Off-sales licences per 10,000 population	20.7	9.7

rate is statistically significantly **higher** than the **City of Edinburgh** rate

rate is statistically significantly **higher** than the **City of Edinburgh** rate

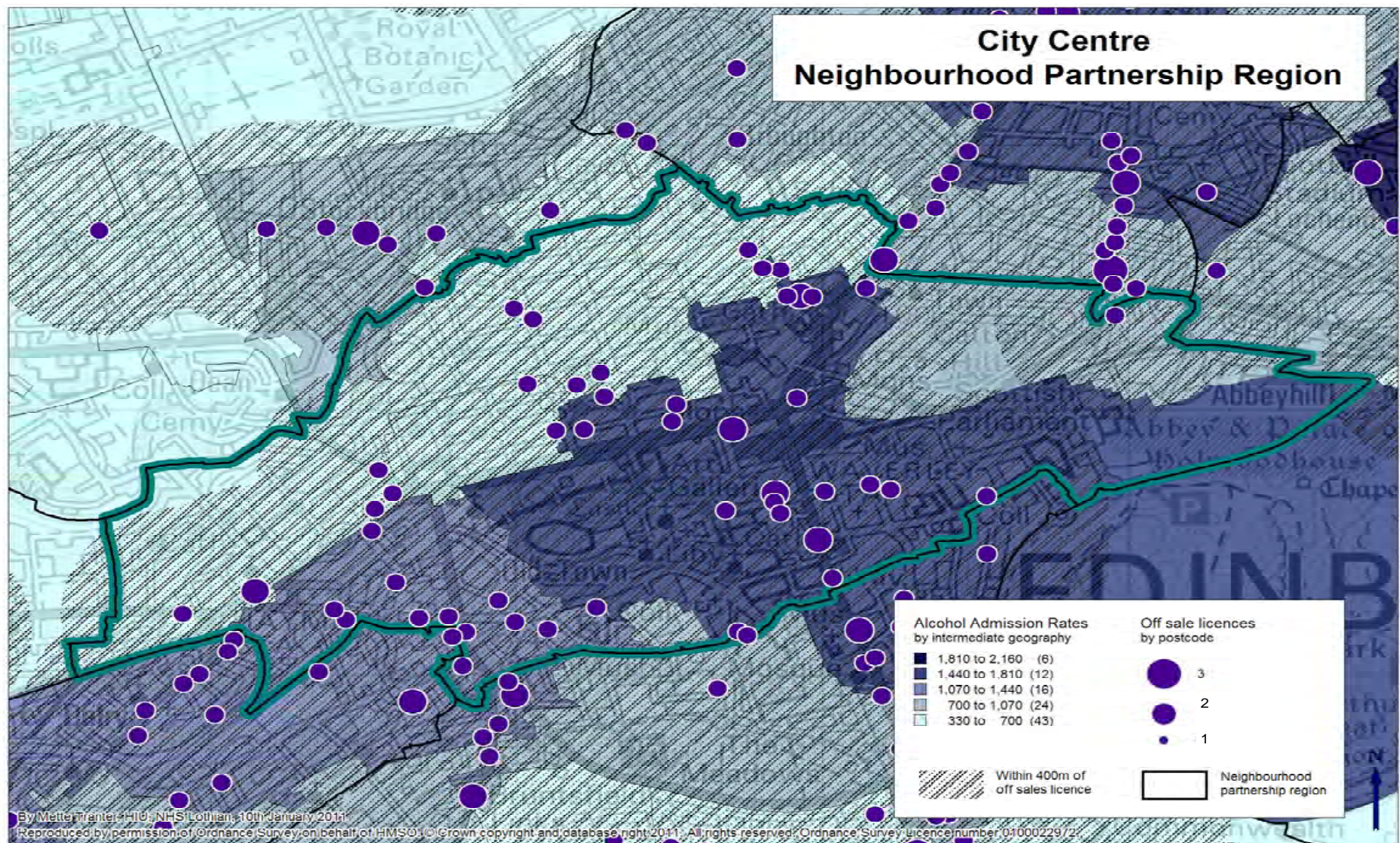
1.3 Alcohol related hospital admissions and deaths

Indicator	City Centre NP	Edinburgh CHP	Scotland
Alcohol hospital admissions rate 2007-2009 ⁴	911.8	894.0	1088.0
Alcohol related deaths rate 2005-2009 ⁵	43.7	41.3	46.4

rate is statistically significantly **lower** than the **Scotland** rate

rate is not statistically different from the Scotland rate

City Centre Neighbourhood Partnership Region



Venue types were classified from City of Edinburgh licencing data based on the premises description and name.

Categories were assigned as follows:

Pub/Bar – any mention of pub/bar/inn in description

Nightclub – any mention of nightclub/niteclub/night club

Hotel – hotel/B&B

Hostel/Backpackers

Café - any mention of café in the description

Restaurant – any mention of restaurant in the description or in the premises name

Supermarket – any mention of supermarket in the description

Convenience Store – any mention of convenience store/shop, corner shop, newsagents, licensed grocer, general store in the description

Off sales – any mention of off licence or off-sales in the description

Takeaway

Social Club/Sports Club/Private Members Club – i.e. rugby clubs, bowling clubs, gyms, social clubs, private members club etc.

Theatre/Cinema/Casino/Bingo

Multipurpose venue – e.g. Assembly, Teviot, The Hub etc.

Other retail – Jenners, tourist shops etc.

Adult entertainment

Other

If a premises came under more than one category (e.g. hotel + bar + restaurant or café + bar) then priorities were given to certain types, e.g. if 'hotel' was mentioned anywhere that was the category the premises was assigned as a hotel and cafe came before bar, convenience store before off-sales etc.

Some manual changes were made when the data was validated by licencing staff at CoE.

2 Craigentinny/Duddingston Neighbourhood Partnership

2.1 Total licences and type

Venue Type ¹	Licences
Convenience Store	10
Hotel	2
Off sales	3
Other retail	1
Pub/Bar	11
Restaurant	2
Social Club/Sports Club/Private Members Club	8
Supermarket	2
Total Licences	39

2.2 Licences per 10,000 population (aged 18+)²

Indicator	Craigentinny / Duddingston NP	City of Edinburgh
Total licences	39	1816
Total licences per 10,000 population	17.6	43.0
Off-sales licences ³	15	412
Off-sales licences per 10,000 population	6.76	9.7

2.3 Alcohol related hospital admissions and deaths

Indicator	Craigentinny / Duddingston NP	Edinburgh CHP	Scotland
Alcohol hospital admissions rate 2007-2009 ⁴	911.8	894.0	1088.0
Alcohol related deaths rate 2005-2009 ⁵	43.7	41.3	46.4

Notes:

1. Licence data from City of Edinburgh council - please see notes as to how venue type was categorised.
2. Population based on CHI GP registration data and patient postcodes.
3. Off-sales include: Convenience Stores, Supermarkets, Takeaways and Off sales.
4. Patients discharged from hospital (annually) with alcohol related and attributable conditions:
3-year total number and 3-year average directly age-sex standardised rate per 100,000 population per ye
5. Deaths from alcohol related and attributable conditions:
5-year total number and 5-year average directly age-sex standardised rate per 100,000 population per ye
Indicators 4 & 5 are from ScotPHO Neighbourhood Partnership Profiles 2010

rate is statistically significantly **lower** than the **City of Edinburgh** rate

rate is statistically significantly lower than the **City of Edinburgh** rate

rate is statistically significantly **lower** than the **Scotland** rate
no statistically significant differences

**Craightinny & Duddingston
Neighbourhood Partnership Region**

Alcohol Admission Rates by intermediate geography

1,810 to 2,160	(6)
1,440 to 1,810	(12)
1,070 to 1,440	(16)
700 to 1,070	(24)
330 to 700	(43)

Off sale licences by postcode

3
2
1

Within 400m of off sales licence

Neighbourhood partnership region

By Mette Franter, HLU, NHS Lothian, 10th January 2011.
Reproduced by permission of Ordnance Survey on behalf of HMSO. © Crown copyright and database right 2011. All rights reserved. Ordnance Survey Licence number 0100022972.

Reproduced by permission of Ordnance Survey on behalf of HMSO. © Crown copyright and database right 2011. All rights reserved. Ordnance Survey Licence number 0100022972

City of Edinburgh Overall

Total licences and type

Venue Type ¹	Licences
Adult Entertainment	5
Cafe	34
Convenience Store	243
Hostel/Backpackers	5
Hotel	146
Multipurpose venue	21
Nightclub	33
Off sales	63
Other	56
Other retail	40
Pub/Bar	428
Restaurant	449
Social Club/Sports Club/Private Members Club	160
Supermarket	85
Takeaway	21
Theatre/Cinema/Casino/Bingo	27
Total Licenses	1816

Notes:

1. Licence data from City of Edinburgh council - please see notes as to how venue type was categorised.
 2. Population based on CHI GP registration data and patient postcodes.
 3. Off-sales include: Convenience Stores, Supermarkets, Takeaways and Off sales.
 4. Patients discharged from hospital (annually) with alcohol related and attributable conditions:
3-year total number and 3-year average directly age-sex standardised rate per 100,000 population per year.
 5. Deaths from alcohol related and attributable conditions:
5-year total number and 5-year average directly age-sex standardised rate per 100,000 population per year.
- Indicators 4 & 5 are from ScotPHO Neighbourhood Partnership Profiles 2010

Licensing density ranges from **16.1** licences per 10,000 population (Liberton/Gilmerton) to **265.8** licences per 10,000 population (City Centre).

Off-sales density ranges from **4.5** (Pentlands) to **20.7** (City Centre).

Venue types were classified from City of Edinburgh licencing data based on the premises description and name.

Categories were assigned as follows:

Pub/Bar – any mention of pub/bar/inn in description

Nightclub – any mention of nightclub/niteclub/night club

Hotel – hotel/B&B

Hostel/Backpackers

Café - any mention of café in the description

Restaurant – any mention of restaurant in the description or in the premises name

Supermarket – any mention of supermarket in the description

Convenience Store – any mention of convenience store/shop, corner shop, newsagents, licensed grocer, general store in the description

Off sales – any mention of off licence or off-sales in the description

Takeaway

Social Club/Sports Club/Private Members Club – i.e. rugby clubs, bowling clubs, gyms, social clubs, private members club etc.

Theatre/Cinema/Casino/Bingo

Multipurpose venue – e.g. Assembly, Teviot, The Hub etc.

Other retail – Jenners, tourist shops etc.

Adult entertainment

Other

If a premises came under more than one category (e.g. hotel + bar + restaurant or café + bar) then priorities were given to certain types, e.g. if 'hotel' was mentioned anywhere that was the category the premises was assigned as a hotel and cafe came before bar, convenience store before off-sales etc.

Some manual changes were made when the data was validated by licencing staff at CoE.

3 Portobello/Craigmillar Almond Neighbourhood Partnership

3.1 Total licences and type

Venue Type ¹	Licences
Cafe	1
Convenience Store	17
Hotel	4
Multipurpose venue	1
Off sales	3
Other	3
Pub/Bar	16
Restaurant	8
Social Club/Sports Club/Private Members Club	9
Supermarket	5
Takeaway	3
Total Licences	70

Notes:

1. Licence data from City of Edinburgh council - please see notes as to how venue type was categorised.
 2. Population based on CHI GP registration data and patient postcodes.
 3. Off-sales include: Convenience Stores, Supermarkets, Takeaways and Off sales.
 4. Patients discharged from hospital (annually) with alcohol related and attributable conditions:
3-year total number and 3-year average directly age-sex standardised rate per 100,000 population per year.
 5. Deaths from alcohol related and attributable conditions:
5-year total number and 5-year average directly age-sex standardised rate per 100,000 population per year.
- Indicators 4 & 5 are from ScotPHO Neighbourhood Partnership Profiles 2010

3.2 Licences per 10,000 population (aged 18+)²

Indicator	Portobello / Craigmillar NP	City of Edinburgh
Total licences	70	1816
Total licences per 10,000 population	32.1	43.0
Off-sales licences ³	28	412
Off-sales licences per 10,000 population	12.8	9.7

rate is statistically significantly **lower** than the **City of Edinburgh** rate

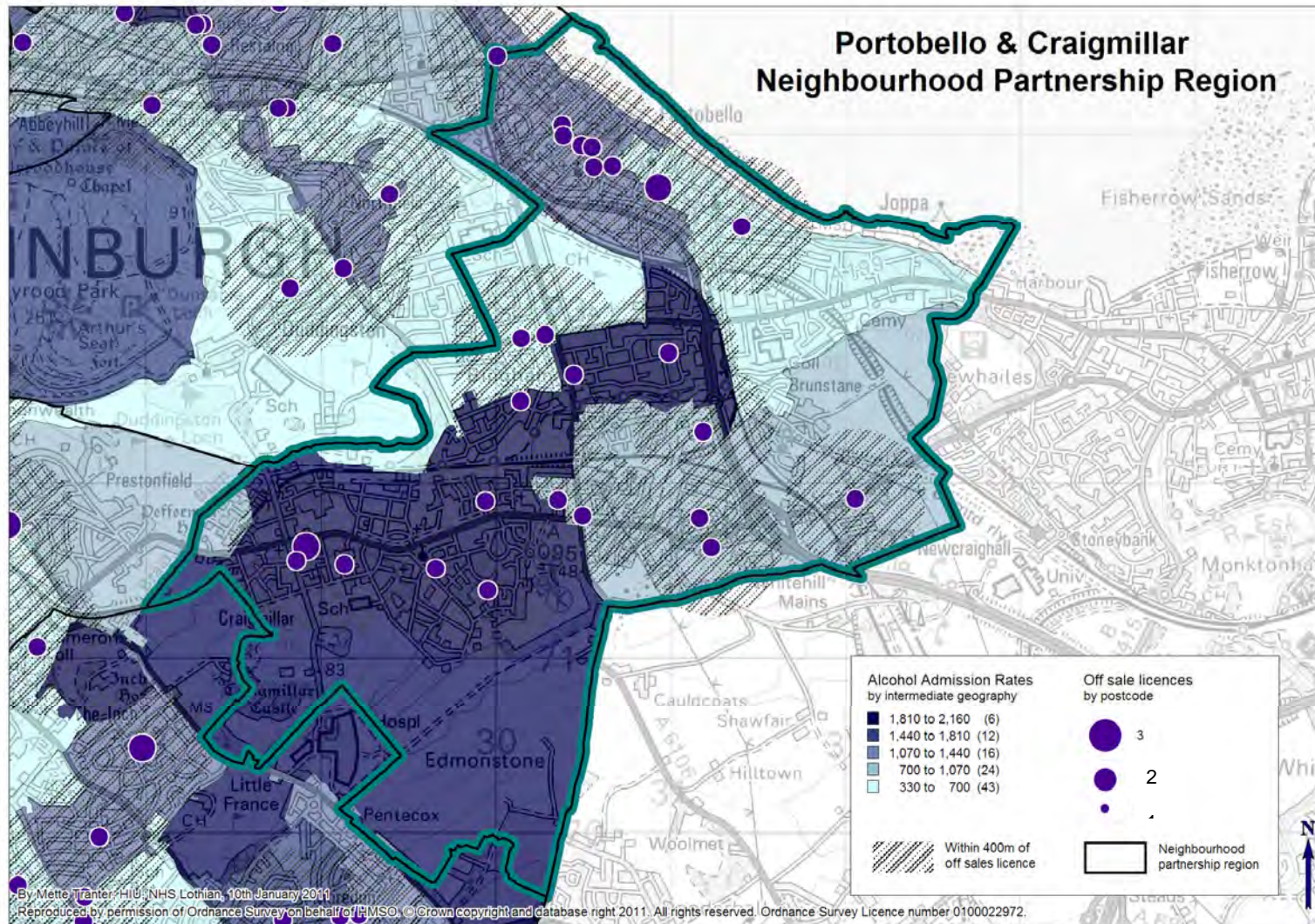
rate is statistically significantly **lower** than the **City of Edinburgh** rate

3.3 Alcohol related hospital admissions and deaths

Indicator	Portobello / Craigmillar NP	Edinburgh CHP	Scotland
Alcohol hospital admissions rate 2007-2009 ⁴	1,302.0	894.0	1088.0
Alcohol related deaths rate 2005-2009 ⁵	52.1	41.3	46.4

rate is statistically significantly **higher** than the **Scotland** rate
no statistically significant differences

Portobello & Craigmillar Neighbourhood Partnership Region



City of Edinburgh Overall

Total licences and type

Venue Type ¹	Licences
Adult Entertainment	5
Cafe	34
Convenience Store	243
Hostel/Backpackers	5
Hotel	146
Multipurpose venue	21
Nightclub	33
Off sales	63
Other	56
Other retail	40
Pub/Bar	428
Restaurant	449
Social Club/Sports Club/Private Members Club	160
Supermarket	85
Takeaway	21
Theatre/Cinema/Casino/Bingo	27
Total Licences	1816

Notes:

1. Licence data from City of Edinburgh council - please see notes as to how venue type was categorised.
 2. Population based on CHI GP registration data and patient postcodes.
 3. Off-sales include: Convenience Stores, Supermarkets, Takeaways and Off sales.
 4. Patients discharged from hospital (annually) with alcohol related and attributable conditions:
3-year total number and 3-year average directly age-sex standardised rate per 100,000 population per year.
 5. Deaths from alcohol related and attributable conditions:
5-year total number and 5-year average directly age-sex standardised rate per 100,000 population per year.
- Indicators 4 & 5 are from ScotPHO Neighbourhood Partnership Profiles 2010

Licensing density ranges from **16.1** licences per 10,000 population (Liberton/Gilmerton) to **265.8** licences per 10,000 population (City Centre).

Off-sales density ranges from **4.5** (Pentlands) to **20.7** (City Centre).

Venue types were classified from City of Edinburgh licencing data based on the premises description and name.

Categories were assigned as follows:

Pub/Bar – any mention of pub/bar/inn in description

Nightclub – any mention of nightclub/niteclub/night club

Hotel – hotel/B&B

Hostel/Backpackers

Café - any mention of café in the description

Restaurant – any mention of restaurant in the description or in the premises name

Supermarket – any mention of supermarket in the description

Convenience Store – any mention of convenience store/shop, corner shop, newsagents, licensed grocer, general store in the description

Off sales – any mention of off licence or off-sales in the description

Takeaway

Social Club/Sports Club/Private Members Club – i.e. rugby clubs, bowling clubs, gyms, social clubs, private members club etc.

Theatre/Cinema/Casino/Bingo

Multipurpose venue – e.g. Assembly, Teviot, The Hub etc.

Other retail – Jenners, tourist shops etc.

Adult entertainment

Other

If a premises came under more than one category (e.g. hotel + bar + restaurant or café + bar) then priorities were given to certain types, e.g. if 'hotel' was mentioned anywhere that was the category the premises was assigned as a hotel and cafe came before bar, convenience store before off-sales etc.

Some manual changes were made when the data was validated by licencing staff at CoE.

4 Liberton/Gilmerton Neighbourhood Partnership

4.1 Total licences and type

Venue Type ¹	Licences
Convenience Store	21
Hotel	3
Pub/Bar	8
Social Club/Sports Club/Private Members Club	5
Supermarket	5
Takeaway	1
Theatre/Cinema/Casino/Bingo	1
Total Licenses	44

Notes:

1. Licence data from City of Edinburgh council - please see notes as to how venue type was categorised.
 2. Population based on CHI GP registration data and patient postcodes.
 3. Off-sales include: Convenience Stores, Supermarkets, Takeaways and Off sales.
 4. Patients discharged from hospital (annually) with alcohol related and attributable conditions:
3-year total number and 3-year average directly age-sex standardised rate per 100,000 population per year.
 5. Deaths from alcohol related and attributable conditions:
5-year total number and 5-year average directly age-sex standardised rate per 100,000 population per year.
- Indicators 4 & 5 are from ScotPHO Neighbourhood Partnership Profiles 2010

4.2 Licences per 10,000 population (aged 18+)²

Indicator	Liberton / Gilmerton NP	City of Edinburgh
Total licences	44	1816
Total licences per 10,000 population	16.1	43.0
Off-sales licences ³	27	412
Off-sales licences per 10,000 population	9.9	9.7

rate is statistically significantly **lower** than the **City of Edinburgh** rate

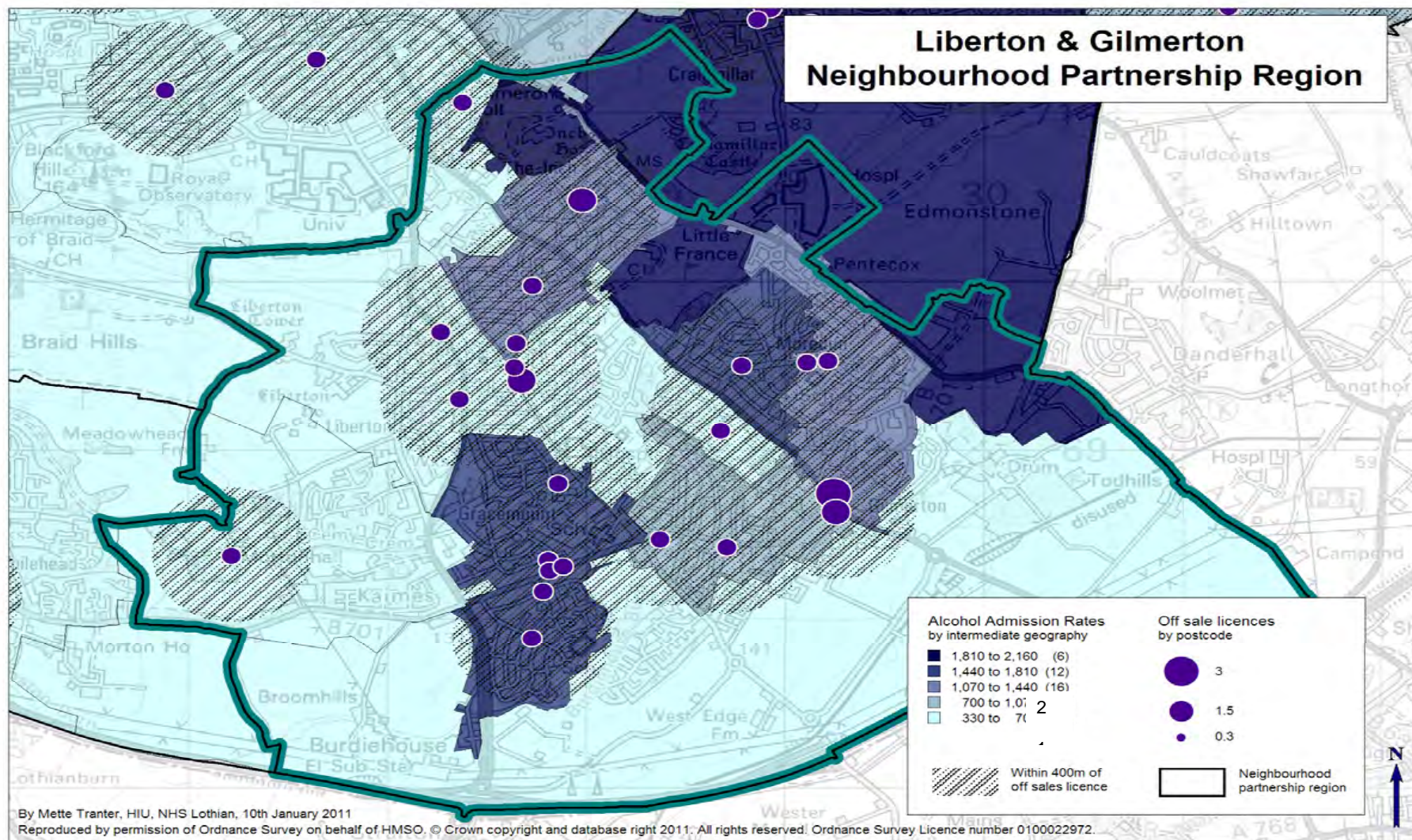
rate is statistically significantly **lower** than the **City of Edinburgh** rate

4.3 Alcohol related hospital admissions and deaths

Indicator	Liberton / Gilmerton NP	Edinburgh CHP	Scotland
Alcohol hospital admissions rate 2007-2009 ⁴	1,099.8	894.0	1088.0
Alcohol related deaths rate 2005-2009 ⁵	40.5	41.3	46.4

no statistically significant differences

no statistically significant differences



City of Edinburgh Overall

Total licences and type

Venue Type ¹	Licences
Adult Entertainment	5
Cafe	34
Convenience Store	243
Hostel/Backpackers	5
Hotel	146
Multipurpose venue	21
Nightclub	33
Off sales	63
Other	56
Other retail	40
Pub/Bar	428
Restaurant	449
Social Club/Sports Club/Private Members Club	160
Supermarket	85
Takeaway	21
Theatre/Cinema/Casino/Bingo	27
Total Licences	1816

Notes:

1. Licence data from City of Edinburgh council - please see notes as to how venue type was categorised.
 2. Population based on CHI GP registration data and patient postcodes.
 3. Off-sales include: Convenience Stores, Supermarkets, Takeaways and Off sales.
 4. Patients discharged from hospital (annually) with alcohol related and attributable conditions:
3-year total number and 3-year average directly age-sex standardised rate per 100,000 population per year.
 5. Deaths from alcohol related and attributable conditions:
5-year total number and 5-year average directly age-sex standardised rate per 100,000 population per year.
- Indicators 4 & 5 are from ScotPHO Neighbourhood Partnership Profiles 2010

Licensing density ranges from **16.1** licences per 10,000 population (Liberton/Gilmerton) to **265.8** licences per 10,000 population (City Centre).

Off-sales density ranges from **4.5** (Pentlands) to **20.7** (City Centre).

Venue types were classified from City of Edinburgh licencing data based on the premises description and name.

Categories were assigned as follows:

Pub/Bar – any mention of pub/bar/inn in description

Nightclub – any mention of nightclub/niteclub/night club

Hotel – hotel/B&B

Hostel/Backpackers

Café - any mention of café in the description

Restaurant – any mention of restaurant in the description or in the premises name

Supermarket – any mention of supermarket in the description

Convenience Store – any mention of convenience store/shop, corner shop, newsagents, licensed grocer, general store in the description

Off sales – any mention of off licence or off-sales in the description

Takeaway

Social Club/Sports Club/Private Members Club – i.e. rugby clubs, bowling clubs, gyms, social clubs, private members club etc.

Theatre/Cinema/Casino/Bingo

Multipurpose venue – e.g. Assembly, Teviot, The Hub etc.

Other retail – Jenners, tourist shops etc.

Adult entertainment

Other

If a premises came under more than one category (e.g. hotel + bar + restaurant or café + bar) then priorities were given to certain types, e.g. if 'hotel' was mentioned anywhere that was the category the premises was assigned as a hotel and cafe came before bar, convenience store before off-sales etc.

Some manual changes were made when the data was validated by licencing staff at CoE.

5 South Central

5.1 Total licences and type

Venue Type ¹	Licences
Adult Entertainment	1
Cafe	3
Convenience Store	36
Hotel	23
Multipurpose venue	3
Off sales	14
Other	6
Other retail	6
Pub/Bar	59
Restaurant	86
Social Club/Sports Club/Private Members Club	19
Supermarket	14
Takeaway	2
Theatre/Cinema/Casino/Bingo	6
Total licences	278

Notes:

- Licence data from City of Edinburgh council - please see notes as to how venue type was categorised.
 - Population based on CHI GP registration data and patient postcodes.
 - Off-sales include: Convenience Stores, Supermarkets, Takeaways and Off sales.
 - Patients discharged from hospital (annually) with alcohol related and attributable conditions:
3-year total number and 3-year average directly age-sex standardised rate per 100,000 population per year.
 - Deaths from alcohol related and attributable conditions:
5-year total number and 5-year average directly age-sex standardised rate per 100,000 population per year.
- Indicators 4 & 5 are from ScotPHO Neighbourhood Partnership Profiles 2010

5.2 Licences per 10,000 population (aged 18+)²

Indicator	South Central NP	City of Edinburgh
Total licences	278	1816
Total licences per 10,000 population	41.4	43.0
Off-sales licences ³	66	412
Off-sales licences per 10,000 population	9.9	9.7

no statistically significant differences

no statistically significant differences

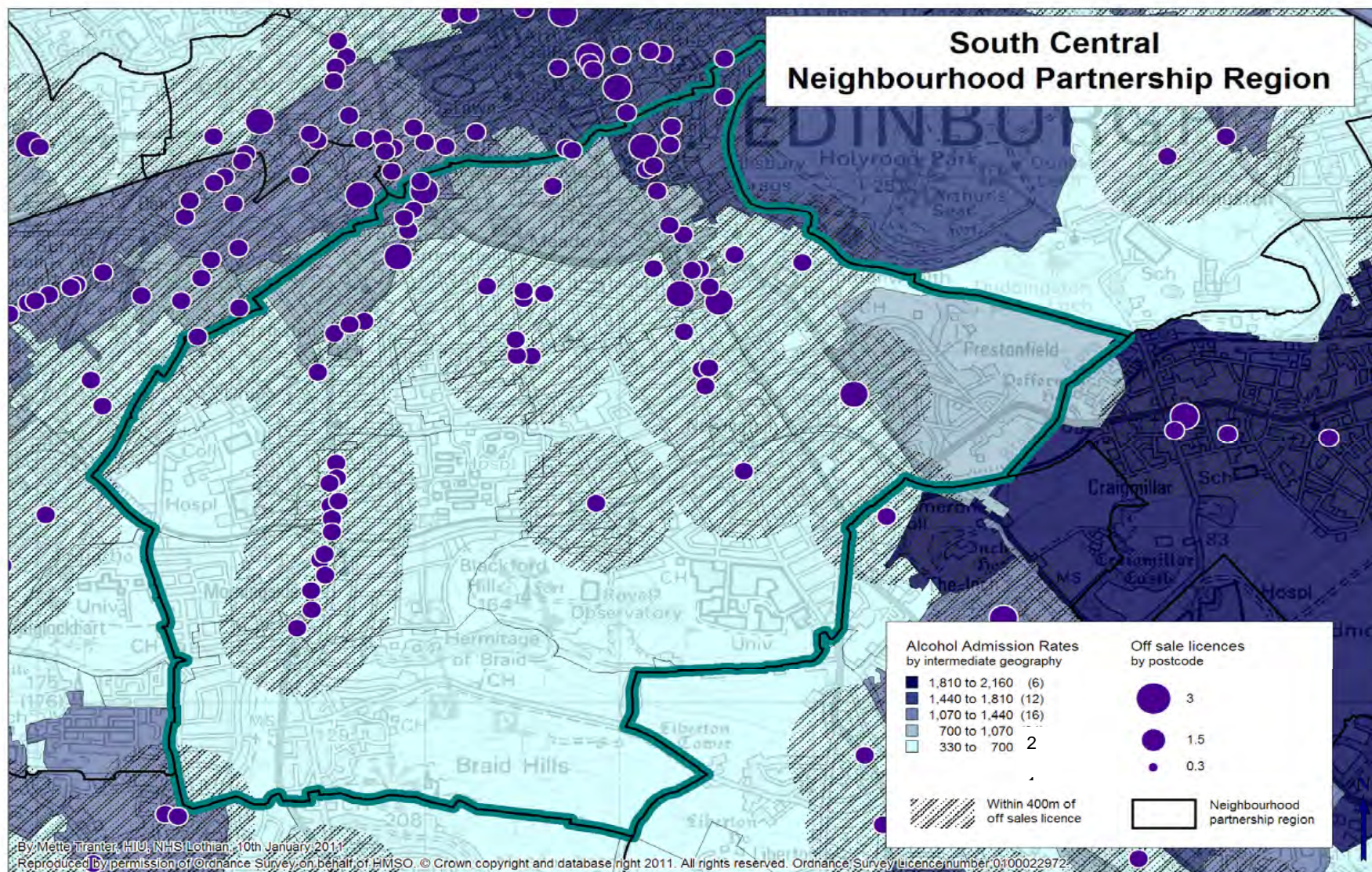
5.3 Alcohol related hospital admissions and deaths

Indicator	South Central NP	Edinburgh CHP	Scotland
Alcohol hospital admissions rate 2007-2009 ⁴	661.4	894.0	1088.0
Alcohol related deaths rate 2005-2009 ⁵	31.5	41.3	46.4

rate is statistically significantly **lower** than the **Scotland** rate

rate is statistically significantly **lower** than the **Scotland** rate

South Central Neighbourhood Partnership Region



By Mette Tranter, HIU, NHS Lothian, 10th January 2011

Reproduced by permission of Ordnance Survey on behalf of HMSO. © Crown copyright and database right 2011. All rights reserved. Ordnance Survey licence number 0100022972

City of Edinburgh Overall

Total licences and type

Venue Type ¹	Licences
Adult Entertainment	5
Cafe	34
Convenience Store	243
Hostel/Backpackers	5
Hotel	146
Multipurpose venue	21
Nightclub	33
Off sales	63
Other	56
Other retail	40
Pub/Bar	428
Restaurant	449
Social Club/Sports Club/Private Members Club	160
Supermarket	85
Takeaway	21
Theatre/Cinema/Casino/Bingo	27
Total Licenses	1816

Notes:

1. Licence data from City of Edinburgh council - please see notes as to how venue type was categorised.
 2. Population based on CHI GP registration data and patient postcodes.
 3. Off-sales include: Convenience Stores, Supermarkets, Takeaways and Off sales.
 4. Patients discharged from hospital (annually) with alcohol related and attributable conditions:
3-year total number and 3-year average directly age-sex standardised rate per 100,000 population per year.
 5. Deaths from alcohol related and attributable conditions:
5-year total number and 5-year average directly age-sex standardised rate per 100,000 population per year.
- Indicators 4 & 5 are from ScotPHO Neighbourhood Partnership Profiles 2010

Licensing density ranges from **16.1** licences per 10,000 population (Liberton/Gilmerton) to **265.8** licences per 10,000 population (City Centre).

Off-sales density ranges from **4.5** (Pentlands) to **20.7** (City Centre).

Venue types were classified from City of Edinburgh licencing data based on the premises description and name.

Categories were assigned as follows:

Pub/Bar – any mention of pub/bar/inn in description

Nightclub – any mention of nightclub/niteclub/night club

Hotel – hotel/B&B

Hostel/Backpackers

Café - any mention of café in the description

Restaurant – any mention of restaurant in the description or in the premises name

Supermarket – any mention of supermarket in the description

Convenience Store – any mention of convenience store/shop, corner shop, newsagents, licensed grocer, general store in the description

Off sales – any mention of off licence or off-sales in the description

Takeaway

Social Club/Sports Club/Private Members Club – i.e. rugby clubs, bowling clubs, gyms, social clubs, private members club etc.

Theatre/Cinema/Casino/Bingo

Multipurpose venue – e.g. Assembly, Teviot, The Hub etc.

Other retail – Jenners, tourist shops etc.

Adult entertainment

Other

If a premises came under more than one category (e.g. hotel + bar + restaurant or café + bar) then priorities were given to certain types, e.g. if 'hotel' was mentioned anywhere that was the category the premises was assigned as a hotel and cafe came before bar, convenience store before off-sales etc.

Some manual changes were made when the data was validated by licencing staff at CoE.

6 South West Neighbourhood Partnership

6.1 Total licences and type

Venue Type ¹	Licences
Cafe	1
Convenience Store	38
Hotel	5
Multipurpose venue	3
Off sales	7
Other	5
Other retail	2
Pub/Bar	36
Restaurant	26
Social Club/Sports Club/Private Members Club	19
Supermarket	14
Theatre/Cinema/Casino/Bingo	6
Total licences	162

Notes:

1. Licence data from City of Edinburgh council - please see notes as to how venue type was categorised.
 2. Population based on CHI GP registration data and patient postcodes.
 3. Off-sales include: Convenience Stores, Supermarkets, Takeaways and Off sales.
 4. Patients discharged from hospital (annually) with alcohol related and attributable conditions:
3-year total number and 3-year average directly age-sex standardised rate per 100,000 population per year.
 5. Deaths from alcohol related and attributable conditions:
5-year total number and 5-year average directly age-sex standardised rate per 100,000 population per year.
- Indicators 4 & 5 are from ScotPHO Neighbourhood Partnership Profiles 2010

6.2 Licences per 10,000 population (aged 18+)²

Indicator	South West NP	City of Edinburgh
Total licences	162	1816
Total licences per 10,000 population	29.5	43.0
Off-sales licences ³	59	412
Off-sales licences per 10,000 population	10.8	9.7

rate is statistically significantly **lower** than the **City of Edinburgh** rate

rate is statistically significantly **lower** than the **City of Edinburgh** rate

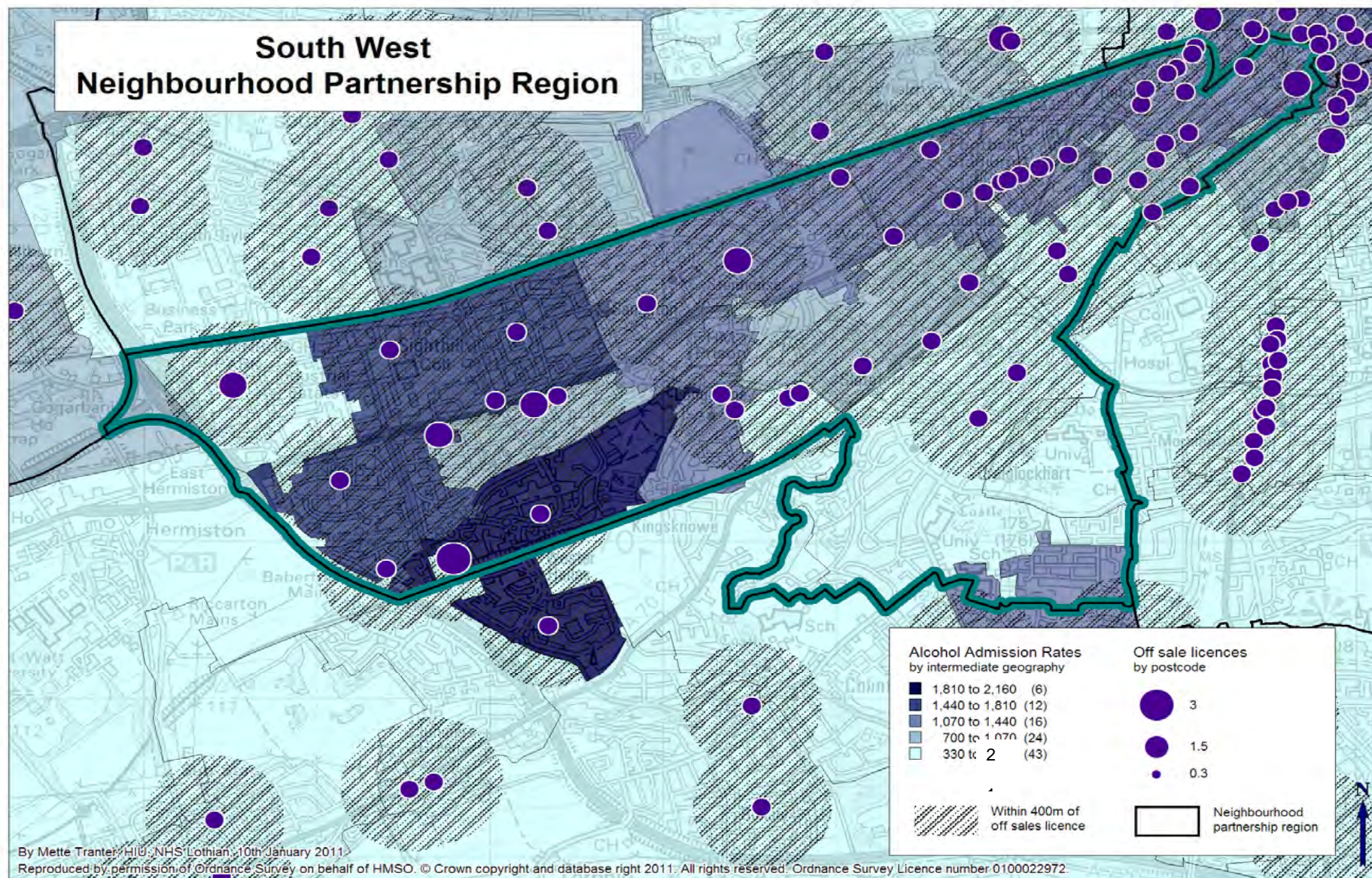
6.3 Alcohol related hospital admissions and deaths

Indicator	South West NP	Edinburgh CHP	Scotland
Alcohol hospital admissions rate 2007-2009 ⁴	1,089.5	894.0	1088.0
Alcohol related deaths rate 2005-2009 ⁵	54.6	41.3	46.4

no statistically significant differences

no statistically significant differences

South West Neighbourhood Partnership Region



City of Edinburgh Overall

Total licences and type

Venue Type ¹	Licences
Adult Entertainment	5
Cafe	34
Convenience Store	243
Hostel/Backpackers	5
Hotel	146
Multipurpose venue	21
Nightclub	33
Off sales	63
Other	56
Other retail	40
Pub/Bar	428
Restaurant	449
Social Club/Sports Club/Private Members Club	160
Supermarket	85
Takeaway	21
Theatre/Cinema/Casino/Bingo	27
Total Licenses	1816

Notes:

1. Licence data from City of Edinburgh council - please see notes as to how venue type was categorised.
 2. Population based on CHI GP registration data and patient postcodes.
 3. Off-sales include: Convenience Stores, Supermarkets, Takeaways and Off sales.
 4. Patients discharged from hospital (annually) with alcohol related and attributable conditions:
3-year total number and 3-year average directly age-sex standardised rate per 100,000 population per year.
 5. Deaths from alcohol related and attributable conditions:
5-year total number and 5-year average directly age-sex standardised rate per 100,000 population per year.
- Indicators 4 & 5 are from ScotPHO Neighbourhood Partnership Profiles 2010

Licensing density ranges from **16.1** licences per 10,000 population (Liberton/Gilmerton) to **265.8** licences per 10,000 population (City Centre).

Off-sales density ranges from **4.5** (Pentlands) to **20.7** (City Centre).

Venue types were classified from City of Edinburgh licencing data based on the premises description and name.

Categories were assigned as follows:

Pub/Bar – any mention of pub/bar/inn in description

Nightclub – any mention of nightclub/niteclub/night club

Hotel – hotel/B&B

Hostel/Backpackers

Café - any mention of café in the description

Restaurant – any mention of restaurant in the description or in the premises name

Supermarket – any mention of supermarket in the description

Convenience Store – any mention of convenience store/shop, corner shop, newsagents, licensed grocer, general store in the description

Off sales – any mention of off licence or off-sales in the description

Takeaway

Social Club/Sports Club/Private Members Club – i.e. rugby clubs, bowling clubs, gyms, social clubs, private members club etc.

Theatre/Cinema/Casino/Bingo

Multipurpose venue – e.g. Assembly, Teviot, The Hub etc.

Other retail – Jenners, tourist shops etc.

Adult entertainment

Other

If a premises came under more than one category (e.g. hotel + bar + restaurant or café + bar) then priorities were given to certain types, e.g. if 'hotel' was mentioned anywhere that was the category the premises was assigned as a hotel and cafe came before bar, convenience store before off-sales etc.

Some manual changes were made when the data was validated by licencing staff at CoE.

7 Pentlands Neighbourhood Partnership

7.1 Total licences and type

Venue Type ¹	Licences
Adult Entertainment	1
Convenience Store	13
Hotel	2
Multipurpose venue	1
Off sales	2
Other	1
Pub/Bar	13
Restaurant	5
Social Club/Sports Club/Private Members Club	15
Supermarket	2
Takeaway	1
Theatre/Cinema/Casino/Bingo	1
Total licences	57

Notes:

1. Licence data from City of Edinburgh council - please see notes as to how venue type was categorised.
 2. Population based on CHI GP registration data and patient postcodes.
 3. Off-sales include: Convenience Stores, Supermarkets, Takeaways and Off sales.
 4. Patients discharged from hospital (annually) with alcohol related and attributable conditions:
3-year total number and 3-year average directly age-sex standardised rate per 100,000 population per year.
 5. Deaths from alcohol related and attributable conditions:
5-year total number and 5-year average directly age-sex standardised rate per 100,000 population per year.
- Indicators 4 & 5 are from ScotPHO Neighbourhood Partnership Profiles 2010

7.2 Licences per 10,000 population (aged 18+)²

Indicator	Pentlands NP	City of Edinburgh
Total licences	57	1816
Total licences per 10,000 population	14.3	43.0
Off-sales licences ³	18	412
Off-sales licences per 10,000 population	4.5	9.7

rate is statistically significantly **lower** than the **City of Edinburgh** rate

rate is statistically significantly **lower** than the **City of Edinburgh** rate

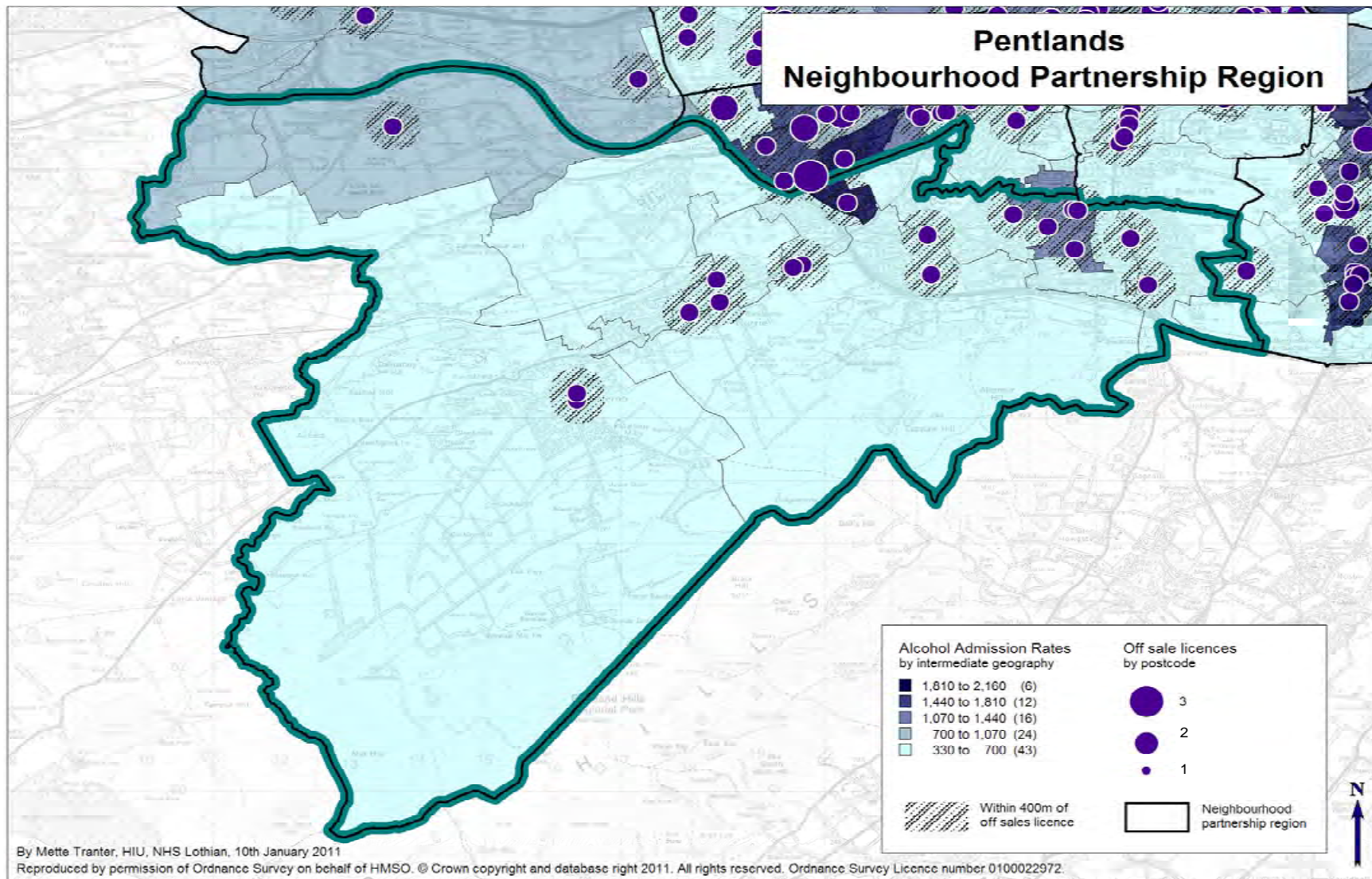
7.3 Alcohol related hospital admissions and deaths

Indicator	Pentlands NP	Edinburgh CHP	Scotland
Alcohol hospital admissions rate 2007-2009 ⁴	690.0	894.0	1088.0
Alcohol related deaths rate 2005-2009 ⁵	25.1	41.3	46.4

rate is statistically significantly **lower** than the **Scotland** rate

rate is statistically significantly **lower** than the **Scotland** rate

Pentlands Neighbourhood Partnership Region



City of Edinburgh Overall

Total licences and type

Venue Type ¹	Licences
Adult Entertainment	5
Cafe	34
Convenience Store	243
Hostel/Backpackers	5
Hotel	146
Multipurpose venue	21
Nightclub	33
Off sales	63
Other	56
Other retail	40
Pub/Bar	428
Restaurant	449
Social Club/Sports Club/Private Members Club	160
Supermarket	85
Takeaway	21
Theatre/Cinema/Casino/Bingo	27
Total Licenses	1816

Notes:

1. Licence data from City of Edinburgh council - please see notes as to how venue type was categorised.
 2. Population based on CHI GP registration data and patient postcodes.
 3. Off-sales include: Convenience Stores, Supermarkets, Takeaways and Off sales.
 4. Patients discharged from hospital (annually) with alcohol related and attributable conditions:
3-year total number and 3-year average directly age-sex standardised rate per 100,000 population per year.
 5. Deaths from alcohol related and attributable conditions:
5-year total number and 5-year average directly age-sex standardised rate per 100,000 population per year.
- Indicators 4 & 5 are from ScotPHO Neighbourhood Partnership Profiles 2010

Licensing density ranges from **16.1** licences per 10,000 population (Liberton/Gilmerton) to **265.8** licences per 10,000 population (City Centre).

Off-sales density ranges from **4.5** (Pentlands) to **20.7** (City Centre).

Venue types were classified from City of Edinburgh licencing data based on the premises description and name.

Categories were assigned as follows:

Pub/Bar – any mention of pub/bar/inn in description

Nightclub – any mention of nightclub/niteclub/night club

Hotel – hotel/B&B

Hostel/Backpackers

Café - any mention of café in the description

Restaurant – any mention of restaurant in the description or in the premises name

Supermarket – any mention of supermarket in the description

Convenience Store – any mention of convenience store/shop, corner shop, newsagents, licensed grocer, general store in the description

Off sales – any mention of off licence or off-sales in the description

Takeaway

Social Club/Sports Club/Private Members Club – i.e. rugby clubs, bowling clubs, gyms, social clubs, private members club etc.

Theatre/Cinema/Casino/Bingo

Multipurpose venue – e.g. Assembly, Teviot, The Hub etc.

Other retail – Jenners, tourist shops etc.

Adult entertainment

Other

If a premises came under more than one category (e.g. hotel + bar + restaurant or café + bar) then priorities were given to certain types, e.g. if 'hotel' was mentioned anywhere that was the category the premises was assigned as a hotel and cafe came before bar, convenience store before off-sales etc.

Some manual changes were made when the data was validated by licencing staff at CoE.

8 Western Edinburgh Neighbourhood Partnership

8.1 Total licences and type

Venue Type ¹	Licences
Convenience Store	12
Hotel	19
Multipurpose venue	1
Off sales	3
Other	6
Other retail	2
Pub/Bar	12
Restaurant	12
Social Club/Sports Club/Private Members Club	15
Supermarket	10
Theatre/Cinema/Casino/Bingo	1
Total licences	93

Notes:

1. Licence data from City of Edinburgh council - please see notes as to how venue type was categorised.
 2. Population based on CHI GP registration data and patient postcodes.
 3. Off-sales include: Convenience Stores, Supermarkets, Takeaways and Off sales.
 4. Patients discharged from hospital (annually) with alcohol related and attributable conditions:
3-year total number and 3-year average directly age-sex standardised rate per 100,000 population per year.
 5. Deaths from alcohol related and attributable conditions:
5-year total number and 5-year average directly age-sex standardised rate per 100,000 population per year.
- Indicators 4 & 5 are from ScotPHO Neighbourhood Partnership Profiles 2010

8.2 Licences per 10,000 population (aged 18+)²

Indicator	Western Edinburgh NP	City of Edinburgh
Total licences	93	1816
Total licences per 10,000 population	24.3	43.0
Off-sales licences ³	25	412
Off-sales licences per 10,000 population	6.5	9.7

rate is statistically significantly **lower** than the **City of Edinburgh** rate

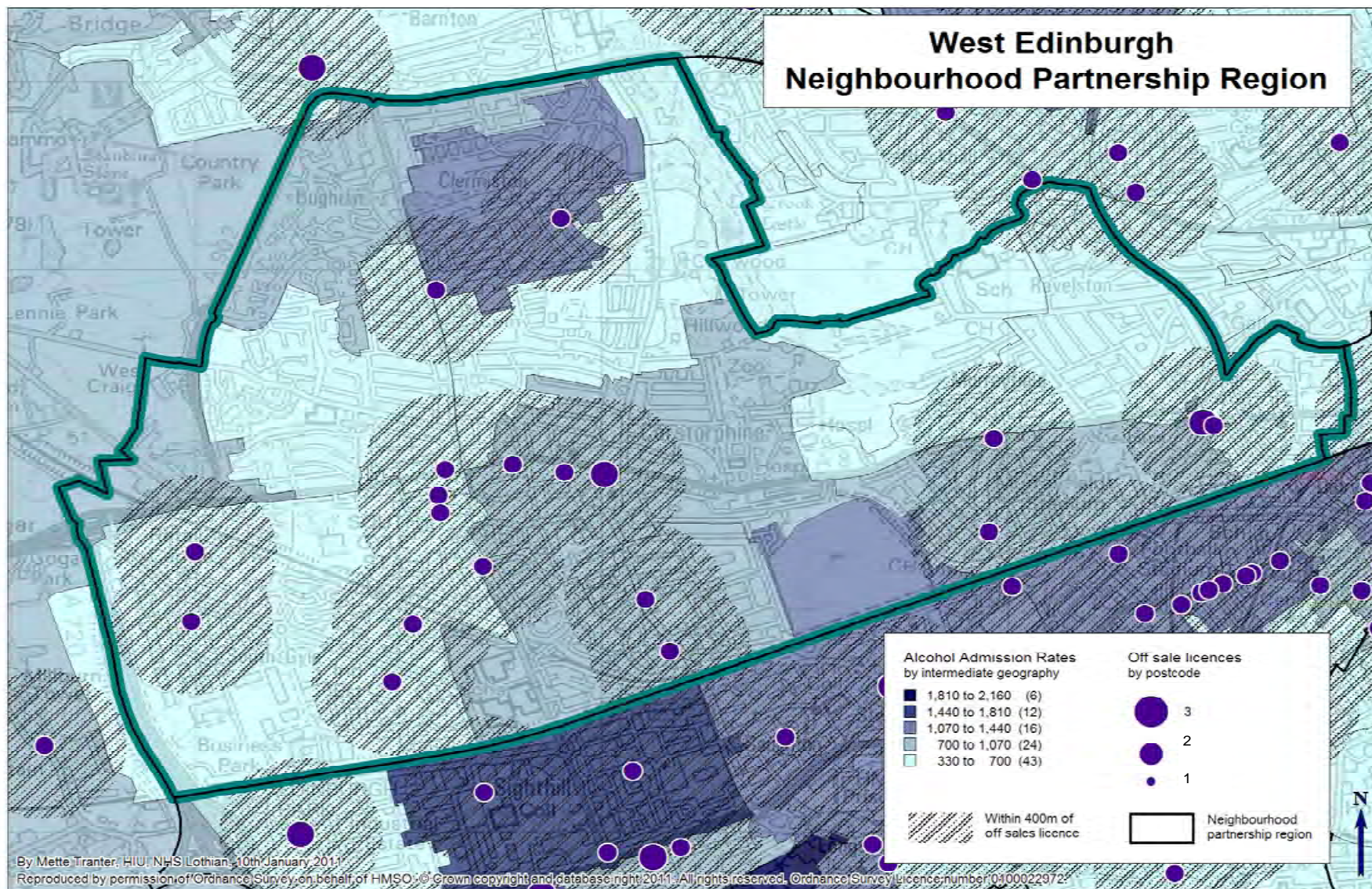
no statistically significant differences

8.3 Alcohol related hospital admissions and deaths

Indicator	Western Edinburgh NP	Edinburgh CHP	Scotland
Alcohol hospital admissions rate 2007-2009 ⁴	695.2	894.0	1088.0
Alcohol related deaths rate 2005-2009 ⁵	31.5	41.3	46.4

rate is statistically significantly **lower** than the **Scotland** rate

rate is statistically significantly **lower** than the **Scotland** rate



City of Edinburgh Overall

Total licences and type

Venue Type ¹	Licences
Adult Entertainment	5
Cafe	34
Convenience Store	243
Hostel/Backpackers	5
Hotel	146
Multipurpose venue	21
Nightclub	33
Off sales	63
Other	56
Other retail	40
Pub/Bar	428
Restaurant	449
Social Club/Sports Club/Private Members Club	160
Supermarket	85
Takeaway	21
Theatre/Cinema/Casino/Bingo	27
Total Licenses	1816

Notes:

1. Licence data from City of Edinburgh council - please see notes as to how venue type was categorised.
 2. Population based on CHI GP registration data and patient postcodes.
 3. Off-sales include: Convenience Stores, Supermarkets, Takeaways and Off sales.
 4. Patients discharged from hospital (annually) with alcohol related and attributable conditions:
3-year total number and 3-year average directly age-sex standardised rate per 100,000 population per year.
 5. Deaths from alcohol related and attributable conditions:
5-year total number and 5-year average directly age-sex standardised rate per 100,000 population per year.
- Indicators 4 & 5 are from ScotPHO Neighbourhood Partnership Profiles 2010

Licensing density ranges from **16.1** licences per 10,000 population (Liberton/Gilmerton) to **265.8** licences per 10,000 population (City Centre).

Off-sales density ranges from **4.5** (Pentlands) to **20.7** (City Centre).

Venue types were classified from City of Edinburgh licencing data based on the premises description and name.

Categories were assigned as follows:

Pub/Bar – any mention of pub/bar/inn in description

Nightclub – any mention of nightclub/niteclub/night club

Hotel – hotel/B&B

Hostel/Backpackers

Café - any mention of café in the description

Restaurant – any mention of restaurant in the description or in the premises name

Supermarket – any mention of supermarket in the description

Convenience Store – any mention of convenience store/shop, corner shop, newsagents, licensed grocer, general store in the description

Off sales – any mention of off licence or off-sales in the description

Takeaway

Social Club/Sports Club/Private Members Club – i.e. rugby clubs, bowling clubs, gyms, social clubs, private members club etc.

Theatre/Cinema/Casino/Bingo

Multipurpose venue – e.g. Assembly, Teviot, The Hub etc.

Other retail – Jenners, tourist shops etc.

Adult entertainment

Other

If a premises came under more than one category (e.g. hotel + bar + restaurant or café + bar) then priorities were given to certain types, e.g. if 'hotel' was mentioned anywhere that was the category the premises was assigned as a hotel and cafe came before bar, convenience store before off-sales etc.

Some manual changes were made when the data was validated by licencing staff at CoE.

9 Almond Neighbourhood Partnership

9.1 Total licences and type

Venue Type ¹	Licences
Cafe	1
Convenience Store	8
Hotel	7
Multipurpose venue	2
Off sales	1
Pub/Bar	13
Restaurant	9
Social Club/Sports Club/Private Members Club	3
Social Club/Sports Club/Private Members Club	9
Supermarket	4
Takeaway	-
Total Licenses	57

Notes:

1. Licence data from City of Edinburgh council - please see notes as to how venue type was categorised.
 2. Population based on CHI GP registration data and patient postcodes.
 3. Off-sales include: Convenience Stores, Supermarkets, Takeaways and Off sales.
 4. Patients discharged from hospital (annually) with alcohol related and attributable conditions:
3-year total number and 3-year average directly age-sex standardised rate per 100,000 population per year.
 5. Deaths from alcohol related and attributable conditions:
5-year total number and 5-year average directly age-sex standardised rate per 100,000 population per year.
- Indicators 4 & 5 are from ScotPHO Neighbourhood Partnership Profiles 2010

9.2 Licences per 10,000 population (aged 18+)²

Indicator	Almond NP	City of Edinburgh
Total licences	57	1816
Total licences per 10,000 population	27.6	43.0
Off-sales licences ³	13	412
Off-sales licences per 10,000 population	3.6	9.7

rate is statistically significantly **lower** than the **City of Edinburgh** rate

no statistically significant differences

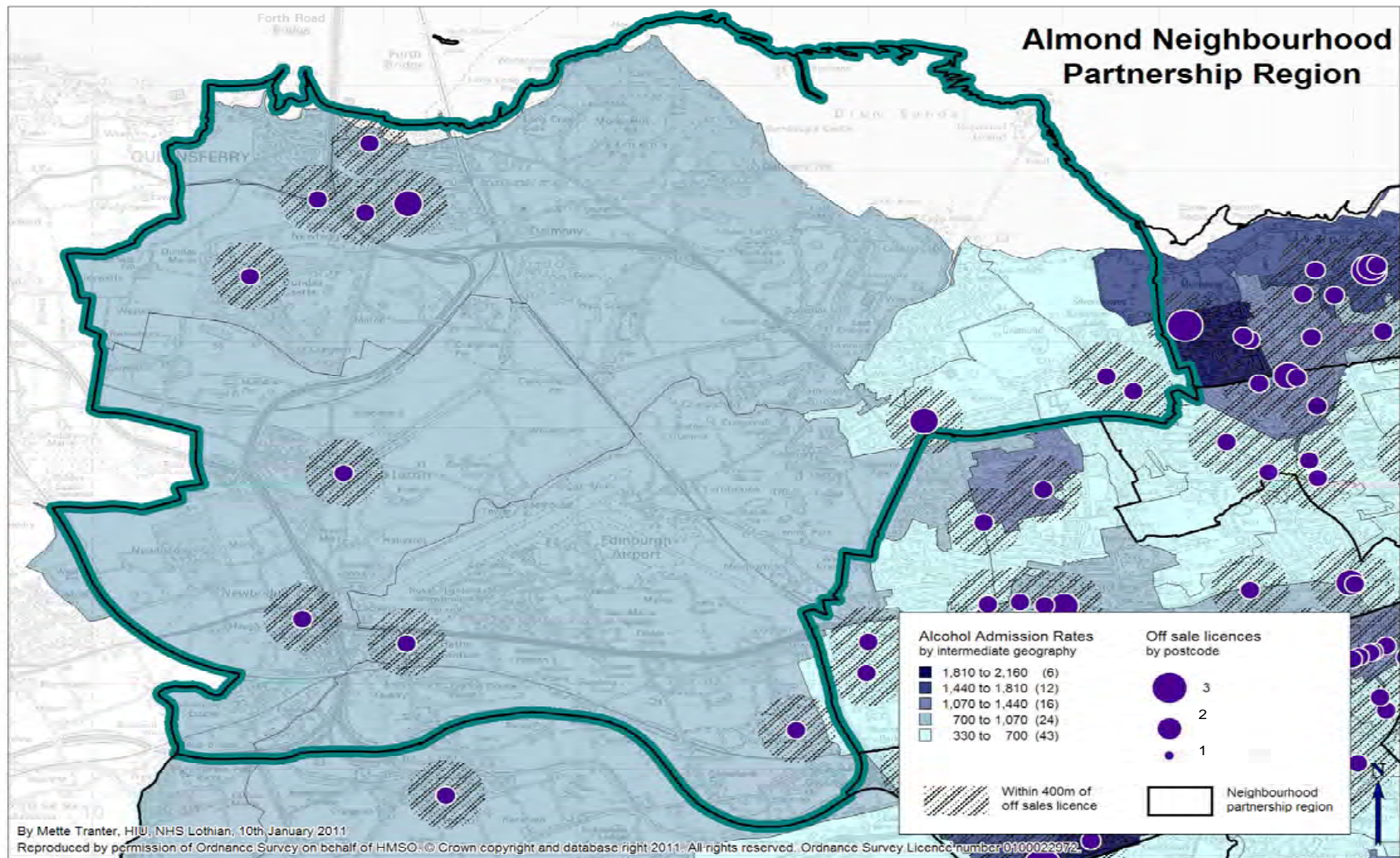
9.3 Alcohol related hospital admissions and deaths

Indicator	Almond NP	Edinburgh CHP	Scotland
Alcohol hospital admissions rate 2007-2009 ⁴	691.2	894.0	1088.0
Alcohol related deaths rate 2005-2009 ⁵	25.6	41.3	46.4

rate is statistically significantly **lower** than the **Scotland** rate

rate is statistically significantly **lower** than the **Scotland** rate

Almond Neighbourhood Partnership Region



City of Edinburgh Overall

Total licences and type

Venue Type ¹	Licences
Adult Entertainment	5
Cafe	34
Convenience Store	243
Hostel/Backpackers	5
Hotel	146
Multipurpose venue	21
Nightclub	33
Off sales	63
Other	56
Other retail	40
Pub/Bar	428
Restaurant	449
Social Club/Sports Club/Private Members Club	160
Supermarket	85
Takeaway	21
Theatre/Cinema/Casino/Bingo	27
Total Licenses	1816

Notes:

1. Licence data from City of Edinburgh council - please see notes as to how venue type was categorised.
 2. Population based on CHI GP registration data and patient postcodes.
 3. Off-sales include: Convenience Stores, Supermarkets, Takeaways and Off sales.
 4. Patients discharged from hospital (annually) with alcohol related and attributable conditions:
3-year total number and 3-year average directly age-sex standardised rate per 100,000 population per year.
 5. Deaths from alcohol related and attributable conditions:
5-year total number and 5-year average directly age-sex standardised rate per 100,000 population per year.
- Indicators 4 & 5 are from ScotPHO Neighbourhood Partnership Profiles 2010

Licensing density ranges from **16.1** licences per 10,000 population (Liberton/Gilmerton) to **265.8** licences per 10,000 population (City Centre).

Off-sales density ranges from **4.5** (Pentlands) to **20.7** (City Centre).

Venue types were classified from City of Edinburgh licencing data based on the premises description and name.

Categories were assigned as follows:

Pub/Bar – any mention of pub/bar/inn in description

Nightclub – any mention of nightclub/niteclub/night club

Hotel – hotel/B&B

Hostel/Backpackers

Café - any mention of café in the description

Restaurant – any mention of restaurant in the description or in the premises name

Supermarket – any mention of supermarket in the description

Convenience Store – any mention of convenience store/shop, corner shop, newsagents, licensed grocer, general store in the description

Off sales – any mention of off licence or off-sales in the description

Takeaway

Social Club/Sports Club/Private Members Club – i.e. rugby clubs, bowling clubs, gyms, social clubs, private members club etc.

Theatre/Cinema/Casino/Bingo

Multipurpose venue – e.g. Assembly, Teviot, The Hub etc.

Other retail – Jenners, tourist shops etc.

Adult entertainment

Other

If a premises came under more than one category (e.g. hotel + bar + restaurant or café + bar) then priorities were given to certain types, e.g. if 'hotel' was mentioned anywhere that was the category the premises was assigned as a hotel and cafe came before bar, convenience store before off-sales etc.

Some manual changes were made when the data was validated by licencing staff at CoE.

10 Forth Neighbourhood Partnership

10.1 Total licences and type

Venue Type ¹	Licences
Convenience Store	16
Hotel	1
Multipurpose venue	1
Off sales	1
Other	1
Pub/Bar	3
Restaurant	2
Social Club/Sports Club/Private Members Club	12
Supermarket	6
Takeaway	1
Total licences	44

Notes:

1. Licence data from City of Edinburgh council - please see notes as to how venue type was categorised.
 2. Population based on CHI GP registration data and patient postcodes.
 3. Off-sales include: Convenience Stores, Supermarkets, Takeaways and Off sales.
 4. Patients discharged from hospital (annually) with alcohol related and attributable conditions:
3-year total number and 3-year average directly age-sex standardised rate per 100,000 population per year.
 5. Deaths from alcohol related and attributable conditions:
5-year total number and 5-year average directly age-sex standardised rate per 100,000 population per year.
- Indicators 4 & 5 are from ScotPHO Neighbourhood Partnership Profiles 2010

10.2 Licences per 10,000 population (aged 18+)²

Indicator	Forth NP	City of Edinburgh
Total licences	44	1816
Total licences per 10,000 population	16.3	43.0
Off-sales licences ³	24	412
Off-sales licences per 10,000 population	8.9	9.7

rate is statistically significantly **lower** than the **City of Edinburgh** rate

no statistically significant differences

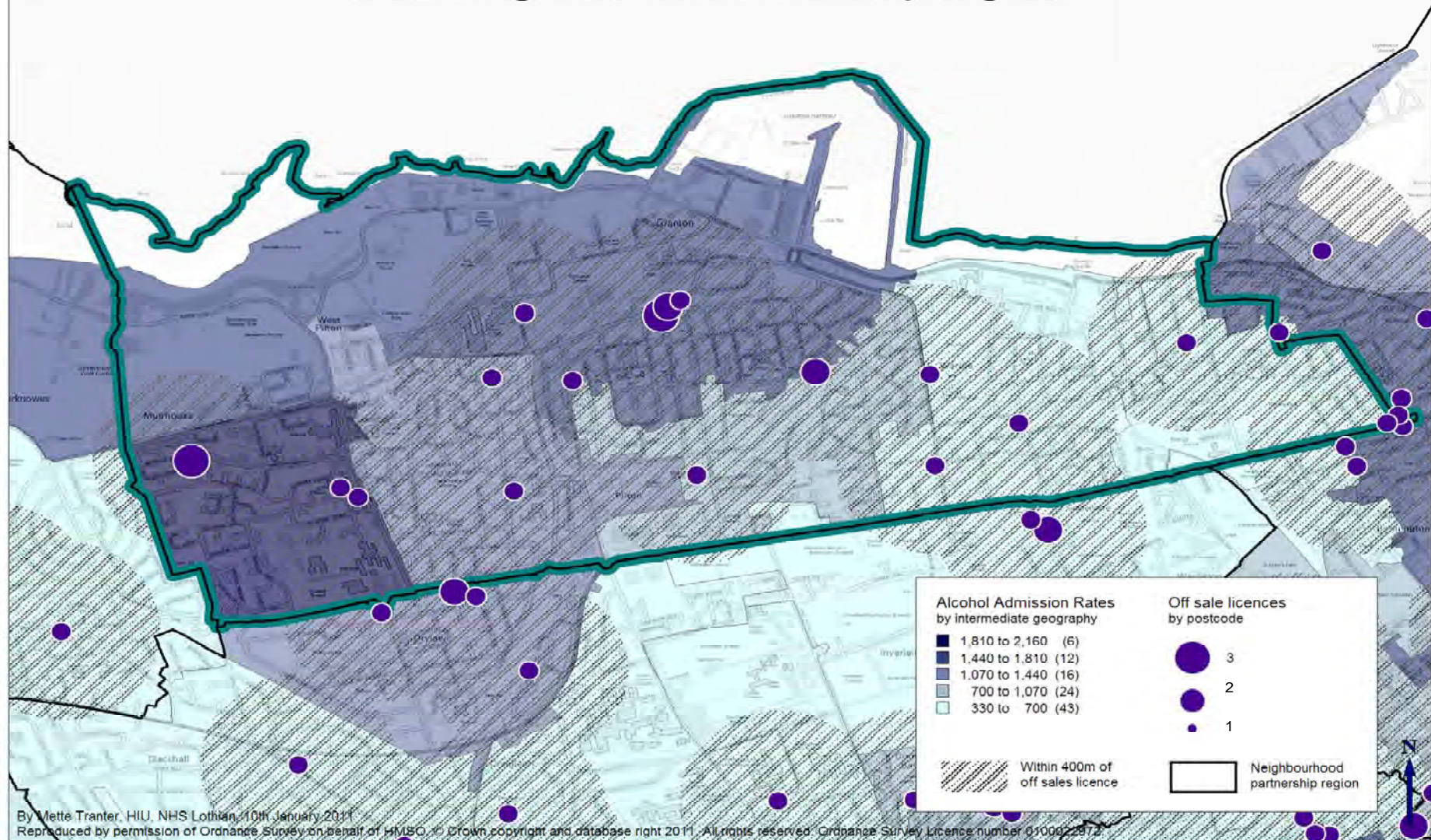
10.3 Alcohol related hospital admissions and deaths

Indicator	Forth NP	Edinburgh CHP	Scotland
Alcohol hospital admissions rate 2007-2009 ⁴	1,203.0	894.0	1088.0
Alcohol related deaths rate 2005-2009 ⁵	55.9	41.3	46.4

rate is statistically significantly **higher** than the **Scotland** rate

no statistically significant differences

Forth Neighbourhood Partnership Region



City of Edinburgh Overall

Total licences and type

Venue Type ¹	Licences
Adult Entertainment	5
Cafe	34
Convenience Store	243
Hostel/Backpackers	5
Hotel	146
Multipurpose venue	21
Nightclub	33
Off sales	63
Other	56
Other retail	40
Pub/Bar	428
Restaurant	449
Social Club/Sports Club/Private Members Club	160
Supermarket	85
Takeaway	21
Theatre/Cinema/Casino/Bingo	27
Total Licenses	1816

Notes:

1. Licence data from City of Edinburgh council - please see notes as to how venue type was categorised.
 2. Population based on CHI GP registration data and patient postcodes.
 3. Off-sales include: Convenience Stores, Supermarkets, Takeaways and Off sales.
 4. Patients discharged from hospital (annually) with alcohol related and attributable conditions:
3-year total number and 3-year average directly age-sex standardised rate per 100,000 population per year.
 5. Deaths from alcohol related and attributable conditions:
5-year total number and 5-year average directly age-sex standardised rate per 100,000 population per year.
- Indicators 4 & 5 are from ScotPHO Neighbourhood Partnership Profiles 2010

Licensing density ranges from **16.1** licences per 10,000 population (Liberton/Gilmerton) to **265.8** licences per 10,000 population (City Centre).

Off-sales density ranges from **4.5** (Pentlands) to **20.7** (City Centre).

Venue types were classified from City of Edinburgh licencing data based on the premises description and name.

Categories were assigned as follows:

Pub/Bar – any mention of pub/bar/inn in description

Nightclub – any mention of nightclub/niteclub/night club

Hotel – hotel/B&B

Hostel/Backpackers

Café - any mention of café in the description

Restaurant – any mention of restaurant in the description or in the premises name

Supermarket – any mention of supermarket in the description

Convenience Store – any mention of convenience store/shop, corner shop, newsagents, licensed grocer, general store in the description

Off sales – any mention of off licence or off-sales in the description

Takeaway

Social Club/Sports Club/Private Members Club – i.e. rugby clubs, bowling clubs, gyms, social clubs, private members club etc.

Theatre/Cinema/Casino/Bingo

Multipurpose venue – e.g. Assembly, Teviot, The Hub etc.

Other retail – Jenners, tourist shops etc.

Adult entertainment

Other

If a premises came under more than one category (e.g. hotel + bar + restaurant or café + bar) then priorities were given to certain types, e.g. if 'hotel' was mentioned anywhere that was the category the premises was assigned as a hotel and cafe came before bar, convenience store before off-sales etc.

Some manual changes were made when the data was validated by licencing staff at CoE.

11 Inverleith Neighbourhood Partnership

11.1 Total licences and type

Venue Type ¹	Licences
Cafe	4
Convenience Store	9
Hotel	9
Multipurpose venue	1
Off sales	8
Other	2
Other retail	2
Pub/Bar	14
Restaurant	19
Social Club/Sports Club/Private Members Club	1
Social Club/Sports Club/Private Members Club	13
Supermarket	3
Total licences	85

Notes:

1. Licence data from City of Edinburgh council - please see notes as to how venue type was categorised.
2. Population based on CHI GP registration data and patient postcodes.
3. Off-sales include: Convenience Stores, Supermarkets, Takeaways and Off sales.
4. Patients discharged from hospital (annually) with alcohol related and attributable conditions:
3-year total number and 3-year average directly age-sex standardised rate per 100,000 population per year.
5. Deaths from alcohol related and attributable conditions:
5-year total number and 5-year average directly age-sex standardised rate per 100,000 population per year.

Indicators 4 & 5 are from ScotPHO Neighbourhood Partnership Profiles 2010

11.2 Licences per 10,000 population (aged 18+)²

Indicator	Inverleith NP	City of Edinburgh
Total licences	85	1816
Total licences per 10,000 population	31.1	43.0
Off-sales licences ³	20	412
Off-sales licences per 10,000 population	7.3	9.7

rate is statistically significantly **lower** than the **City of Edinburgh** rate

no statistically significant differences

11.3 Alcohol related hospital admissions and deaths

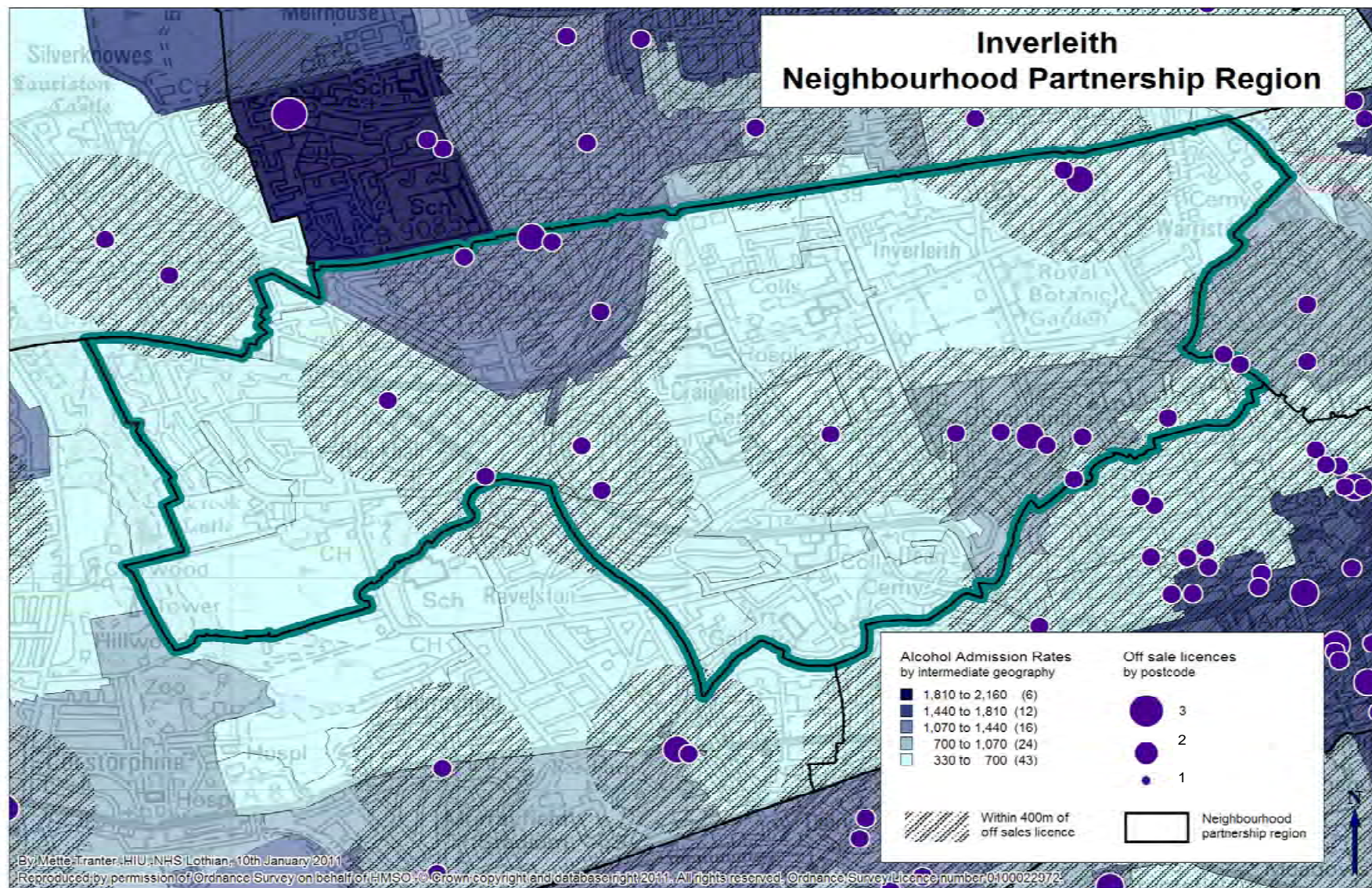
Indicator	Inverleith NP	Edinburgh CHP	Scotland
Alcohol hospital admissions rate 2007-2009 ⁴	664.4	894.0	1088.0
Alcohol related deaths rate 2005-2009 ⁵	30.2	41.3	46.4

rate is statistically significantly **lower** than the **Scotland** rate

rate is statistically significantly **lower** than the **Scotland** rate

rate is statistically significantly **lower** than the **Scotland** rate

Inverleith Neighbourhood Partnership Region



City of Edinburgh Overall

Total licences and type

Venue Type ¹	Licences
Adult Entertainment	5
Cafe	34
Convenience Store	243
Hostel/Backpackers	5
Hotel	146
Multipurpose venue	21
Nightclub	33
Off sales	63
Other	56
Other retail	40
Pub/Bar	428
Restaurant	449
Social Club/Sports Club/Private Members Club	160
Supermarket	85
Takeaway	21
Theatre/Cinema/Casino/Bingo	27
Total Licenses	1816

Notes:

1. Licence data from City of Edinburgh council - please see notes as to how venue type was categorised.
 2. Population based on CHI GP registration data and patient postcodes.
 3. Off-sales include: Convenience Stores, Supermarkets, Takeaways and Off sales.
 4. Patients discharged from hospital (annually) with alcohol related and attributable conditions:
3-year total number and 3-year average directly age-sex standardised rate per 100,000 population per year.
 5. Deaths from alcohol related and attributable conditions:
5-year total number and 5-year average directly age-sex standardised rate per 100,000 population per year.
- Indicators 4 & 5 are from ScotPHO Neighbourhood Partnership Profiles 2010

Licensing density ranges from **16.1** licences per 10,000 population (Liberton/Gilmerton) to **265.8** licences per 10,000 population (City Centre).

Off-sales density ranges from **4.5** (Pentlands) to **20.7** (City Centre).

Venue types were classified from City of Edinburgh licencing data based on the premises description and name.

Categories were assigned as follows:

Pub/Bar – any mention of pub/bar/inn in description

Nightclub – any mention of nightclub/niteclub/night club

Hotel – hotel/B&B

Hostel/Backpackers

Café - any mention of café in the description

Restaurant – any mention of restaurant in the description or in the premises name

Supermarket – any mention of supermarket in the description

Convenience Store – any mention of convenience store/shop, corner shop, newsagents, licensed grocer, general store in the description

Off sales – any mention of off licence or off-sales in the description

Takeaway

Social Club/Sports Club/Private Members Club – i.e. rugby clubs, bowling clubs, gyms, social clubs, private members club etc.

Theatre/Cinema/Casino/Bingo

Multipurpose venue – e.g. Assembly, Teviot, The Hub etc.

Other retail – Jenners, tourist shops etc.

Adult entertainment

Other

If a premises came under more than one category (e.g. hotel + bar + restaurant or café + bar) then priorities were given to certain types, e.g. if 'hotel' was mentioned anywhere that was the category the premises was assigned as a hotel and cafe came before bar, convenience store before off-sales etc.

Some manual changes were made when the data was validated by licencing staff at CoE.

12 Leith Neighbourhood Partnership

12.1 Total licences and type

Venue Type ¹	Licences
Cafe	5
Convenience Store	44
Hotel	7
Multipurpose venue	1
Multipurpose venue	1
Off sales	8
Other	8
Other retail	7
Pub/Bar	82
Restaurant	57
Social Club/Sports Club/Private Members Club	17
Supermarket	12
Takeaway	4
Theatre/Cinema/Casino/Bingo	4
Total licences	257

Notes:

1. Licence data from City of Edinburgh council - please see notes as to how venue type was categorised.
 2. Population based on CHI GP registration data and patient postcodes.
 3. Off-sales include: Convenience Stores, Supermarkets, Takeaways and Off sales.
 4. Patients discharged from hospital (annually) with alcohol related and attributable conditions:
3-year total number and 3-year average directly age-sex standardised rate per 100,000 population per year.
 5. Deaths from alcohol related and attributable conditions:
5-year total number and 5-year average directly age-sex standardised rate per 100,000 population per year.
- Indicators 4 & 5 are from ScotPHO Neighbourhood Partnership Profiles 2010

12.2 Licences per 10,000 population (aged 18+)²

Indicator	Leith NP	City of Edinburgh
Total licences	257	1816
Total licences per 10,000 population	49.0	43.0
Off-sales licences ³	68	412
Off-sales licences per 10,000 population	13.0	9.7

rate is statistically significantly **lower** than the **City of Edinburgh** rate

no statistically significant differences

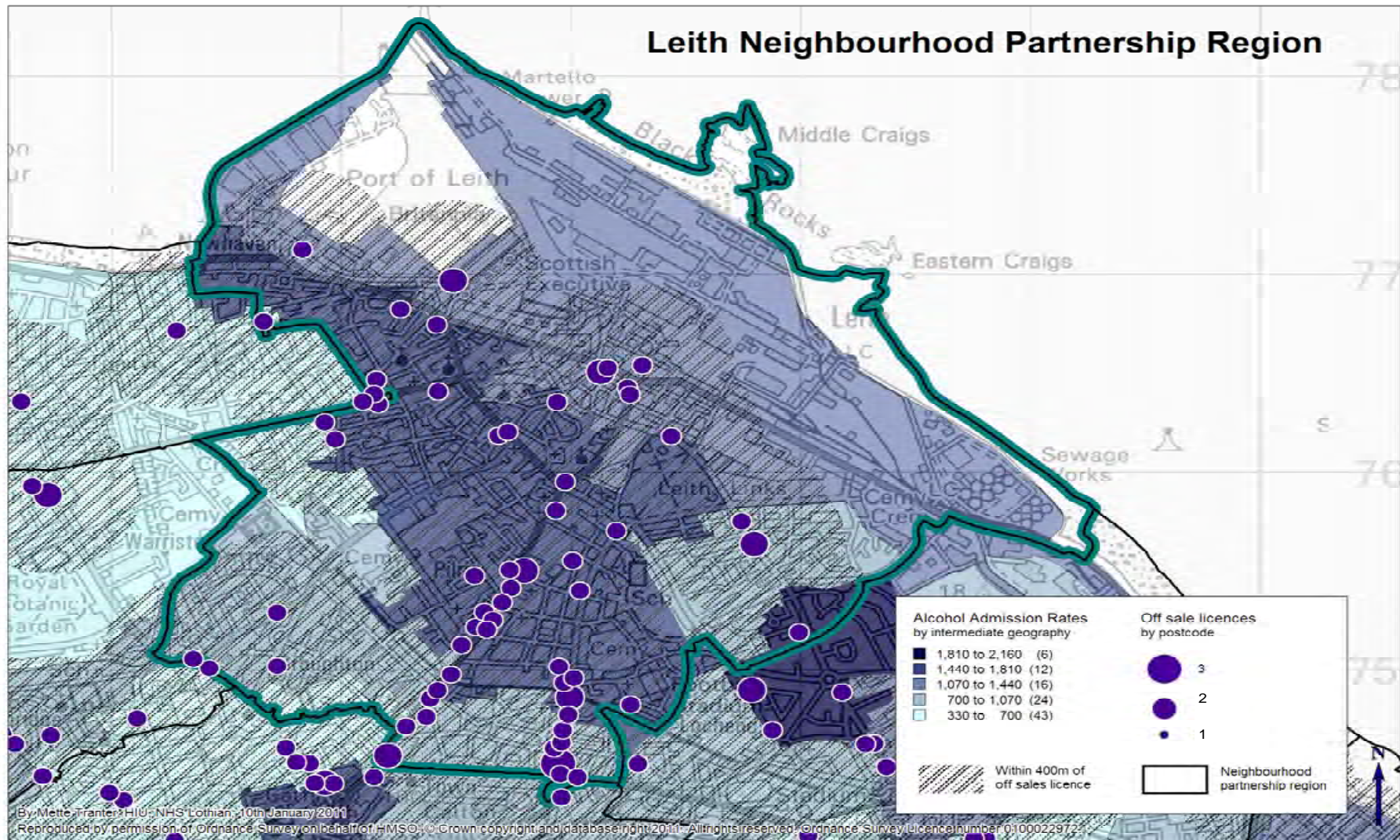
12.3 Alcohol related hospital admissions and deaths

Indicator	Leith NP	Edinburgh CHP	Scotland
Alcohol hospital admissions rate 2007-2009 ⁴	1,249.5	894.0	1088.0
Alcohol related deaths rate 2005-2009 ⁵	76.1	41.3	46.4

rate is statistically significantly **higher** than the **Scotland** rate

rate is statistically significantly **higher** than the **Scotland** rate

Leith Neighbourhood Partnership Region



City of Edinburgh Overall

Total licences and type

Venue Type ¹	Licences
Adult Entertainment	5
Cafe	34
Convenience Store	243
Hostel/Backpackers	5
Hotel	146
Multipurpose venue	21
Nightclub	33
Off sales	63
Other	56
Other retail	40
Pub/Bar	428
Restaurant	449
Social Club/Sports Club/Private Members Club	160
Supermarket	85
Takeaway	21
Theatre/Cinema/Casino/Bingo	27
Total Licenses	1816

Notes:

1. Licence data from City of Edinburgh council - please see notes as to how venue type was categorised.
 2. Population based on CHI GP registration data and patient postcodes.
 3. Off-sales include: Convenience Stores, Supermarkets, Takeaways and Off sales.
 4. Patients discharged from hospital (annually) with alcohol related and attributable conditions:
3-year total number and 3-year average directly age-sex standardised rate per 100,000 population per year.
 5. Deaths from alcohol related and attributable conditions:
5-year total number and 5-year average directly age-sex standardised rate per 100,000 population per year.
- Indicators 4 & 5 are from ScotPHO Neighbourhood Partnership Profiles 2010

Licensing density ranges from **16.1** licences per 10,000 population (Liberton/Gilmerton) to **265.8** licences per 10,000 population (City Centre).

Off-sales density ranges from **4.5** (Pentlands) to **20.7** (City Centre).

Venue types were classified from City of Edinburgh licencing data based on the premises description and name.

Categories were assigned as follows:

Pub/Bar – any mention of pub/bar/inn in description

Nightclub – any mention of nightclub/niteclub/night club

Hotel – hotel/B&B

Hostel/Backpackers

Café - any mention of café in the description

Restaurant – any mention of restaurant in the description or in the premises name

Supermarket – any mention of supermarket in the description

Convenience Store – any mention of convenience store/shop, corner shop, newsagents, licensed grocer, general store in the description

Off sales – any mention of off licence or off-sales in the description

Takeaway

Social Club/Sports Club/Private Members Club – i.e. rugby clubs, bowling clubs, gyms, social clubs, private members club etc.

Theatre/Cinema/Casino/Bingo

Multipurpose venue – e.g. Assembly, Teviot, The Hub etc.

Other retail – Jenners, tourist shops etc.

Adult entertainment

Other

If a premises came under more than one category (e.g. hotel + bar + restaurant or café + bar) then priorities were given to certain types, e.g. if 'hotel' was mentioned anywhere that was the category the premises was assigned as a hotel and cafe came before bar, convenience store before off-sales etc.

Some manual changes were made when the data was validated by licencing staff at CoE.